

lakegogebicia.com

LAKE GOGEBIC

IMPROVEMENT ASSOCIATION

Speaking with one voice for the wellbeing
of Lake Gogebic

Agenda

01.

Who We Are

03.

The Dam

05.

Meet and Greet

02.

What We Do

04.

Rain Filtration

06.

Boat Ride



Who We Are

Introduction

The LGIA exists for the sole purpose of monitoring the lake and maintaining and improving its well-being.

Members and volunteers collaborate with other organizations, to monitor the quality of the water, eradicate and control terrestrial invasive plants and shrubs and provide boat washing and boater education of aquatic invasive species with the assistance of the U.S. Forest Service and Bergland Township.

We proudly partner with organizations and stakeholders to help us achieve our goals including local, state municipalities, Tribes, federal, agencies and policy makers.

What we do

Introduction



01

Monitor

Health of the lake including lake levels, water quality, controlling and preventing invasives, sustaining species and resilient habitats.

02

Partner

With organizations and volunteers to help us achieve our goals, through education, funding and grants.

03

Advocate & Educate

For the lake by providing members tools to maintain healthy shorelines, protect species and prevent/control invasives from entering the lake. We communicate with one voice to partners, stakeholders and legislators.

04

Take Action

Members and volunteers remove purple loosestrife, cull buckthorn, establish habitats for fish and birds, maintain Adopt-a-Highway locations, wash boats and educate boaters on water quality safety.

The Dam



01

Lake levels

UPPCO is tasked with maintaining the lake level between an upper and lower limit spanning 30 inches.

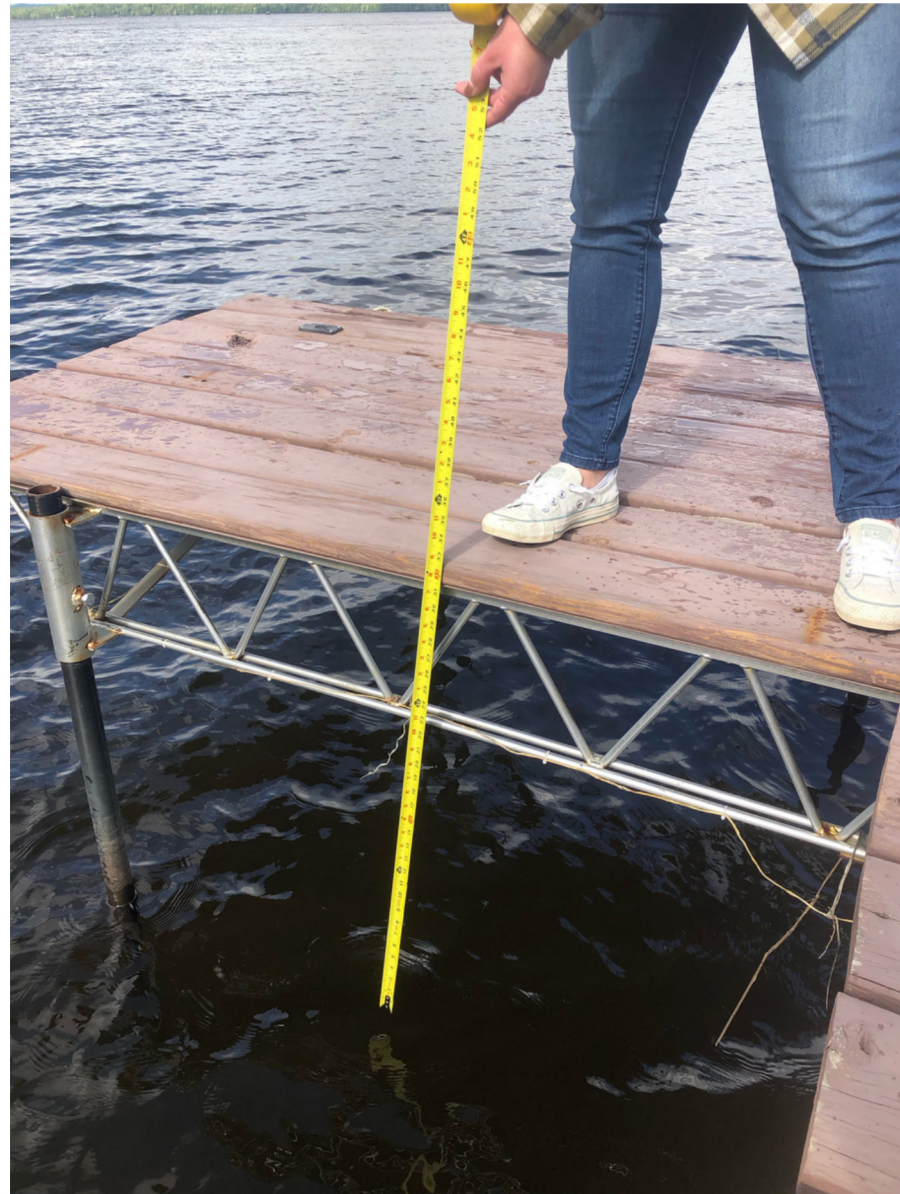
We estimate the lake level should not allow for the level to be 15 inches below the upper limit.

02

Integrity

In the Spring of 2022, damage to dam structure resulted in the lowest lake level residents remembered and stayed that way throughout the summer and into the fall. Besides the serious consequences for the ecological health of the lake the problems associated with docks, boat lifts and underwater boulders now nearer to the surface have impacted safe boating, as well as loss of revenue to business owners.

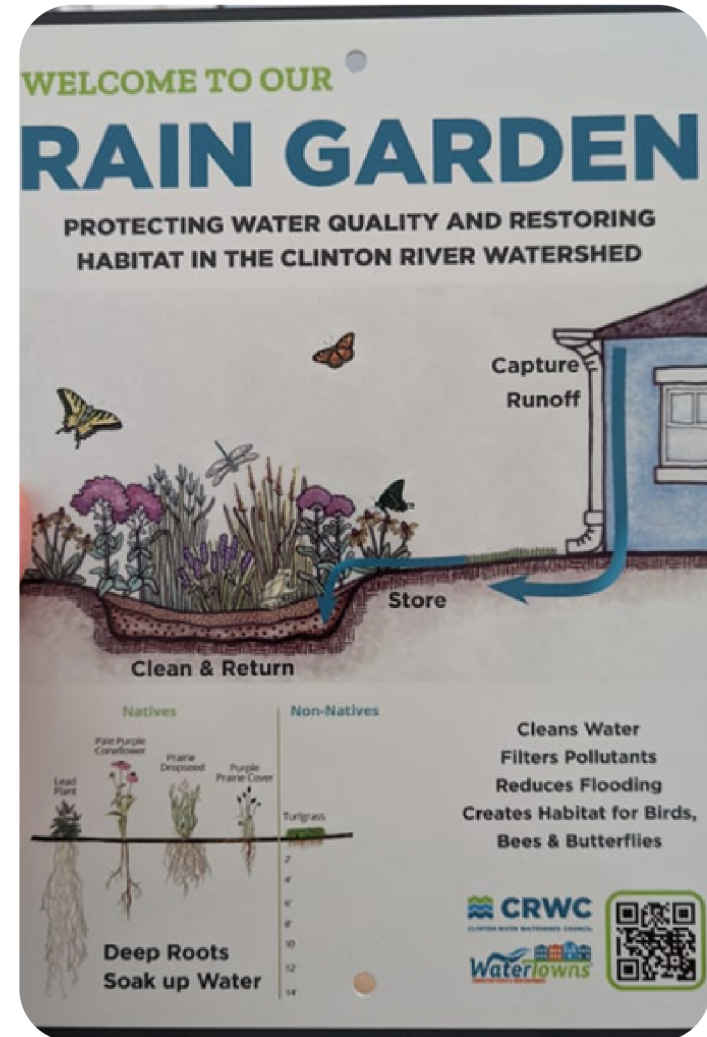
The Dam



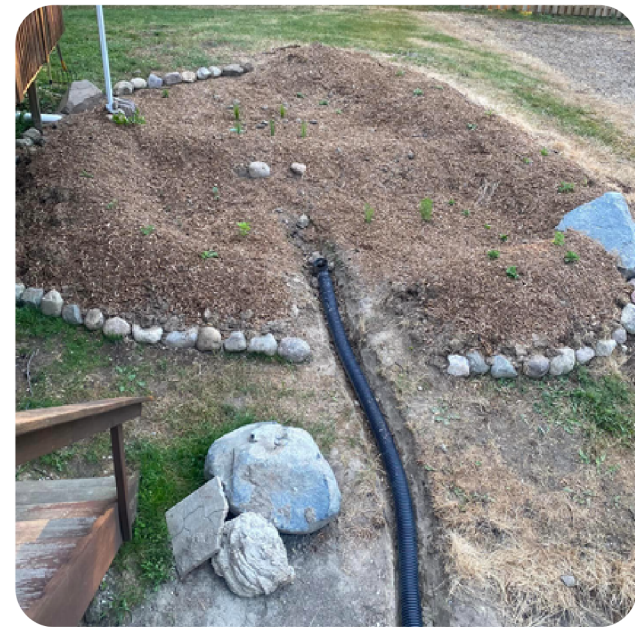
The Request

LGIA would like to present our concerns with the Bergland Dam and the Lake Gogebic water levels to FERC.

We ask Michigan Attorney General Dana Nessel to intercede on our behalf to provide the initial interface with the Federal agency FERC whereby LGIA can present our concerns.



**Rain
Filtration**
Tax Credit



Rain Filtration

Teamwork Is The Key



Municipalities Partner

Provide guidance on grant applications
Facilitate tax credits when earned
Administrative support



LGIA Partner

Identify opportunity
Identify partners
Engage members/landowners
Review projects



Ottawa National Forest MiDNR Lac Vieux Desert Partner

Provide guidance on grant applications
Facilitate native plant selections
Review projects and plan approvals

Our Work

Habitats and Species

LGIA on the Lake

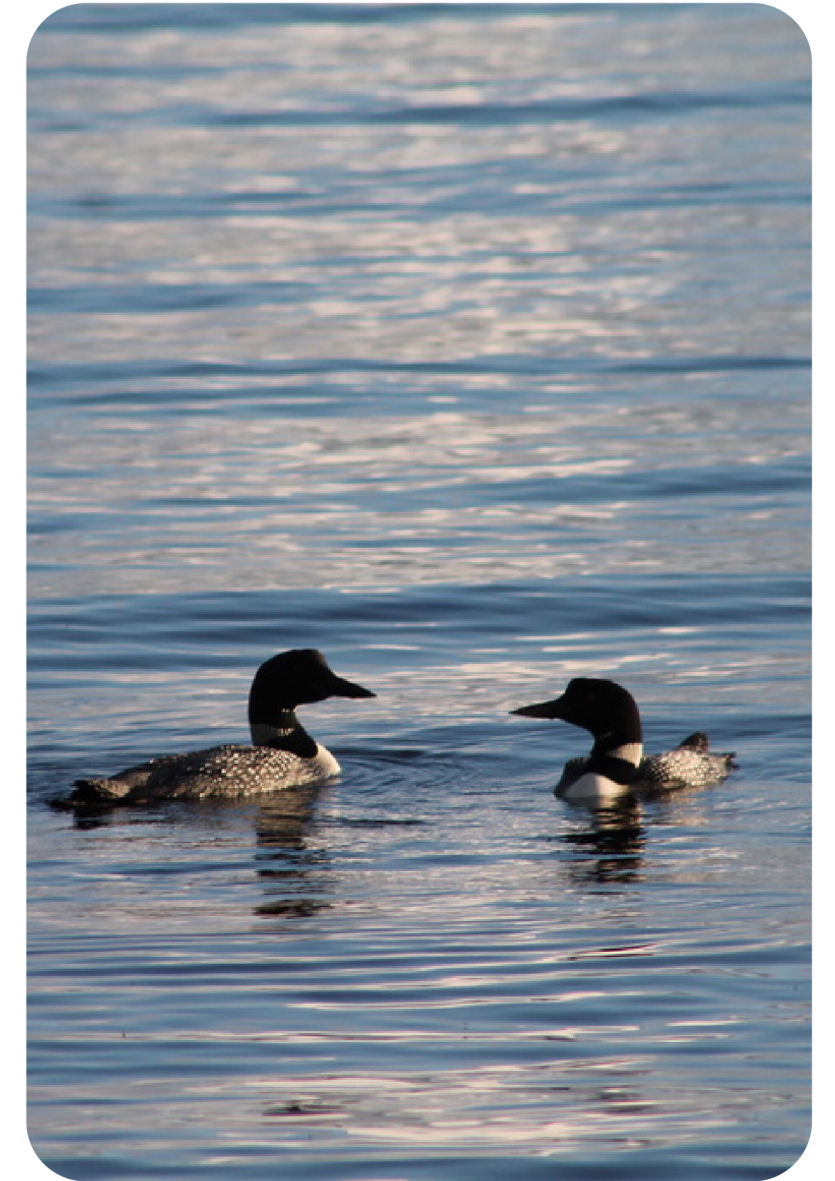
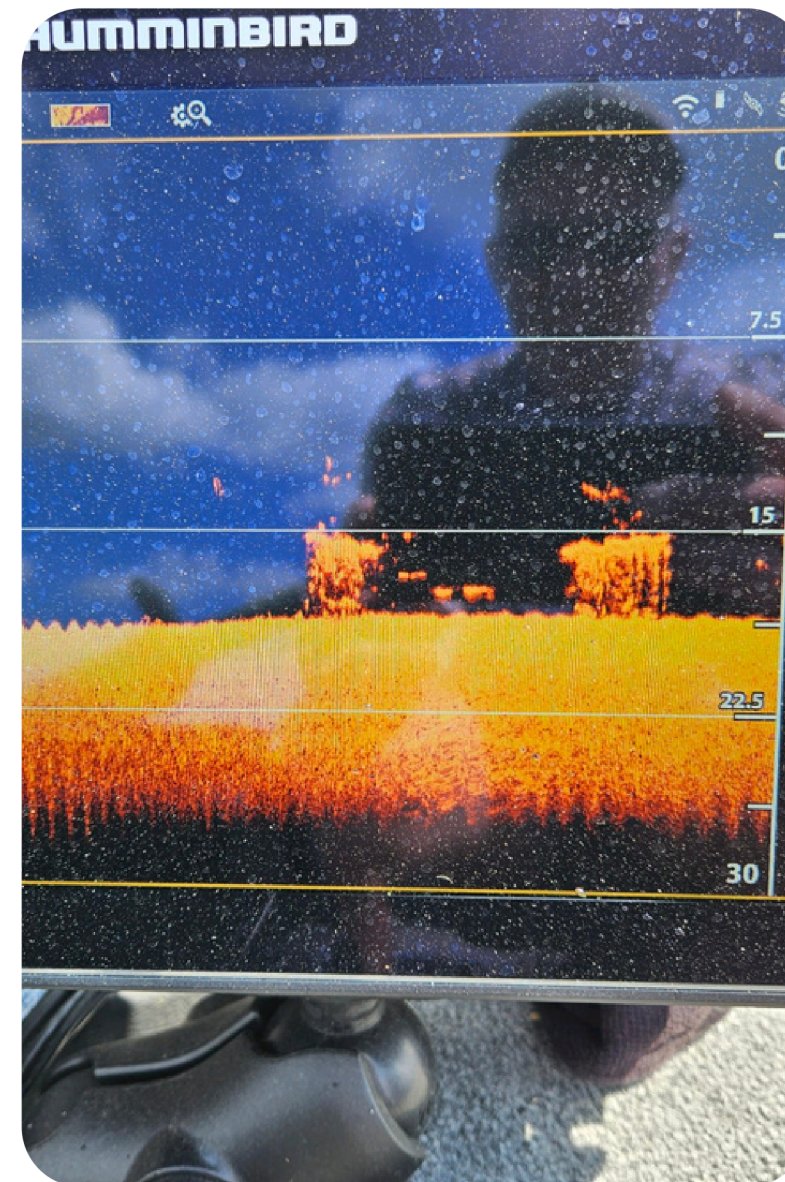


Fish Cribs

We work with DNR partners to place cribs into Lake Gogebic

Fish Cribs

Verifying the cribs reach the bottom of the lake



Loon Nesting

LGIA placed nesting platforms in river bed entries to Lake Gogebic

Our Work

Boat Washing

LGIA member wash boats and educate boaters about aquatic invasive species



Buckthorn

LGIA teams with USFS to remove and treat buckthorn from the Ontonagon Park



Purple Loosestrife

LGIA board member removing purple loosestrife from Lake Gogebic

Preventing and Controlling Invasive Species

LGIA on the Lake





Thank You



Problems With Lake Gogebic Dam and Search for Solutions

The following addresses a way that could alleviate the frustrations over many years that the Lake Gogebic Improvement Associations (LGIA) has experienced with the Upper Peninsula Power Company (UPPCO) that owns and is responsible for repair of the dam on Lake Gogebic, in that it is rare for problems with the dam to be addressed in a reasonable and timely way, to deleterious effects on the lake.

Lake Gogebic is one of three reservoirs supplying the hydroelectric dam at Victoria, MI where UPPCO has the capacity to generate 12 MW of hydroelectric power, which is the largest amount of hydroelectric power that UPPCO generates from any of its hydroelectric dams. The Lake Gogebic reservoir, along with that at Bond Falls, has the capacity of approximately 7,300 megawatt-hours, and that at Cisco Dam of 1,800 megawatt-hours, with all of the water flowing as river-run directly to the Victoria Dam. Because water can be stored upstream of Victoria for release on demand, UPPCO is able to operate the Victoria power station about 80 percent of the time. The Bergland Dam is a low-head structure built of vertical steel I-beams and wood plank flashboards and is 179 feet long and 4 feet high.

UPPCO is tasked with maintaining the lake level between an upper and lower limit spanning 30 inches. We currently estimate the lake level for residents and commercial businesses relying on boating does not allow for the lake level to be 15 inches below the upper limit for successful use of their boats. The lake level generally decreases during the summer and this has been problematic for all as this 15 -inch limit on lake level is almost always reached before the end of a boating season that starts mid-May and can reach into October. Failure of the dam integrity can result in even earlier curtailing of boat use.

The LGIA has noted that often, when unexpected and problematic changes in levels of lake water occur, it can be associated with a loss of the integrity of the dam structure. In the summer of 2022, damage to dam structure resulted in the lowest lake level that lake residents ever remembered and stayed that way throughout the remainder of the summer and into the fall. Besides the problems associated with docks, boat lifts and underwater boulders now nearer to the surface that have impacted safe boating, serious consequences for the ecological health of the lake also occur, as well as loss of revenue to business owners.

In the year 2022, as has happened in previous years, LGIA believes that UPPCO has not responded in a timely way in addressing the problem, and in the end LGIA is left feeling that all efforts to raise serious attention are ignored.

Also to be noted, if unavoidable very high lake levels occur and are not attended to, quite serious problems just from erosion of lake banks can occur since many of the banks are a natural clay structure that lends itself to solubilization. One hundred years ago, the setting (for one season) of a newly high lake level resulted in a 25 foot retreat of the bank at one site, resulting in a newly created lake area with the lake bottom becoming ankle-deep heavy muck and assorted stones, covering what was once a sandy lake bottom.

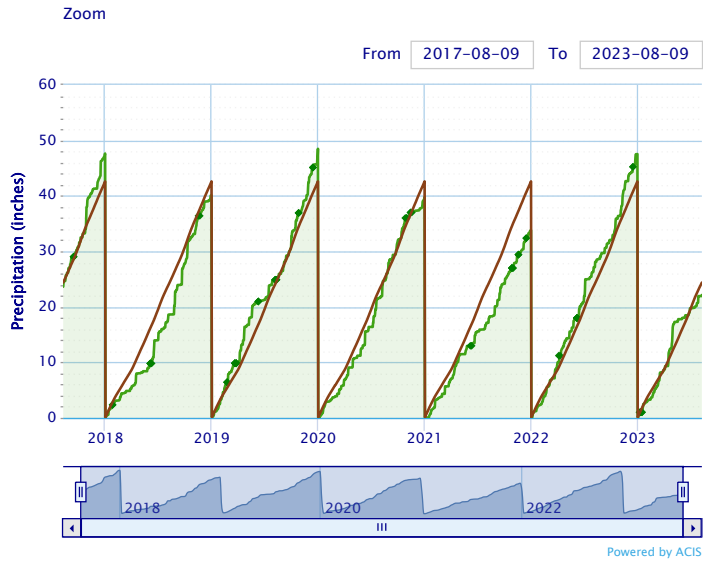
By experience, if successful boating is to be enjoyed for an entire boating season between mid-May and October, then merely controlling the lake level between upper and lower limits as is done now is inadequate. Lake level requirements must be specified with the lower level bound increased during this time to provide a smaller span between limits during the boating season.

UPPCO's power line interconnections make it part of the US Electric Power Grid and therefore UPPCO's hydroelectric power generation is under the jurisdiction of the Federal Energy Regulatory Commission (FERC) of the US Department of Energy. FERC is an independent agency and part of its mission is to regulate hydro power and that includes the oversight of all ongoing project operations, including all the dam safety and security inspections, public safety, and environmental monitoring needed for every aspect of the hydroelectric power system. Bergland Dam and the water levels of Lake Gogebic is therefore included as part of the oversights for which the FERC has responsibility. FERC then also has the responsibility for ensuring that UPPCO meets its contractual obligations with FERC to completely and correctly provide for the entire operation of the Victoria hydroelectric project.

Because of the lack of response by UPPCO to LGIA in addressing its concerns regarding the Bergland Dam, LGIA would like to bring its past experiences with the problems of the Bergland Dam and the Lake Gogebic water levels to the attention of FERC in the most effective and participatory way possible. It would be most beneficial, we believe, if the State of Michigan could provide the initial interface with the Federal agency FERC in order to

set up a mechanism whereby LGIA could present its concerns to FERC and have a reasonable expectation that a diligent effort by FERC will be made to address and provide a path for correction of the problems discussed here. The LGIA would be most grateful for such an effort by the State of Michigan that would lead to ultimate success.

Accumulated Precipitation – BERGLAND DAM, MI



Important for you to know:

- New to WDFN: graph latest data from 5 locations together using Combined Location Graph ([page, announcement](#)) and show latest data from single location as graphs using All Graphs ([example page, announcement](#)).

IMPORTANT [Legacy real-time page](#) ⓘ



7 days 30 days 1 year

- using custom time span -

Lake Gogebic Near Bergland, MI - 04035995

August 9, 2017 - August 9, 2023

Gage height, ft ⓘ

1.31 ft - Jan 10, 2021 08:45:00 PM EST



Show legend ▾

	Value	Status
● Latest Aug 09, 2023 10:45:00 AM EDT	2.66	Provisional
● Selected Jan 10, 2021 08:45:00 PM EST	1.31	Approved

⊕
Not available with custom time spans

● Median ⊖
Showing data on graph

Hide data details view ^

Statistics for Wednesday, August 9, 2023 based on 51 years of data

low (2021)	25th	median	75th	mean	high (1986)
2.38	2.66	2.78	2.88	2.77	3.19

Hide statistics ^

IMPORTANT Data may be [provisional](#)

Change time span

Subscribe to WaterAlert

View related graphs

Download data

View data records

Important for you to know:

- New to WDFN: graph latest data from 5 locations together using Combined Location Graph ([page, announcement](#)) and show latest data from single location as graphs using All Graphs ([example page, announcement](#)).

IMPORTANT [Legacy real-time page](#) ⓘ



7 days 30 days 1 year

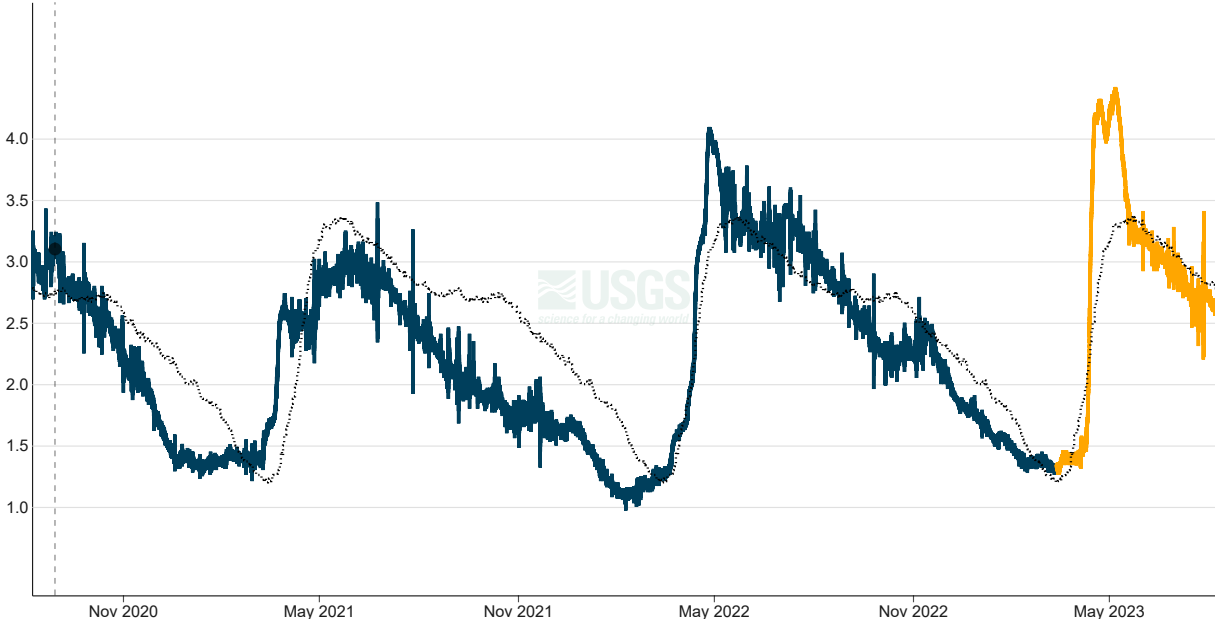
- using custom time span -

Lake Gogebic Near Bergland, MI - 04035995

August 9, 2020 - August 9, 2023

Gage height, ft ⓘ

3.1 ft - Aug 30, 2020 05:45:00 AM EDT



Show legend ▾

	Value	Status
● Latest Aug 09, 2023 10:45:00 AM EDT	2.66	Provisional
● Selected Aug 30, 2020 05:45:00 AM EDT	3.10	Approved
● Compare		
Not available with custom time spans		
● Median		
Showing data on graph		

Hide data details view ^

Statistics for Wednesday, August 9, 2023 based on 51 years of data

low (2021)	25th	median	75th	mean	high (1986)
2.38	2.66	2.78	2.88	2.77	3.19

Hide statistics ^

IMPORTANT Data may be [provisional](#)

Change time span

Subscribe to WaterAlert

View related graphs

Download data

View data records

Important for you to know:

- New to WDFN: graph latest data from 5 locations together using Combined Location Graph ([page, announcement](#)) and show latest data from single location as graphs using All Graphs ([example page, announcement](#)).

IMPORTANT [Legacy real-time page](#) ⓘ



7 days 30 days 1 year

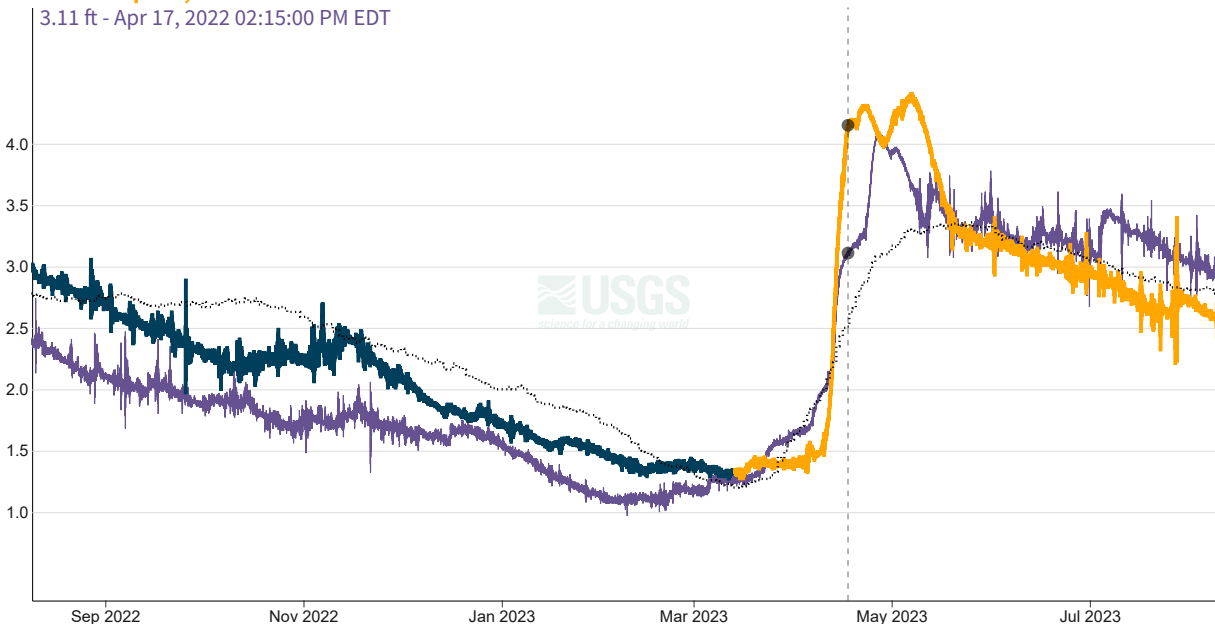
Lake Gogebic Near Bergland, MI - 04035995

August 9, 2022 - August 9, 2023

Gage height, ft ⓘ

4.15 ft - Apr 17, 2023 02:15:00 PM EDT

3.11 ft - Apr 17, 2022 02:15:00 PM EDT



Show legend ▾

	Value	Status	
● Latest Aug 09, 2023 10:45:00 AM EDT	2.66	Provisional	
● Selected Apr 17, 2023 02:15:00 PM EDT	4.15	Provisional	
● Compare Apr 17, 2022 02:15:00 PM EDT	3.11	Approved	⊖
● Median			⊖
Showing data on graph			

Hide data details view ^

Statistics for Wednesday, August 9, 2023 based on 51 years of data

low (2021)	25th	median	75th	mean	high (1986)
2.38	2.66	2.78	2.88	2.77	3.19

Hide statistics ^

IMPORTANT Data may be [provisional](#)

Change time span

Subscribe to WaterAlert

View related graphs

Download data

View data records

Select a date range: